

# NYCRUNS Governors Island 10K 2025 #2

## Governors Island | New York, NY



### USATF Certificate

NY25006MNS

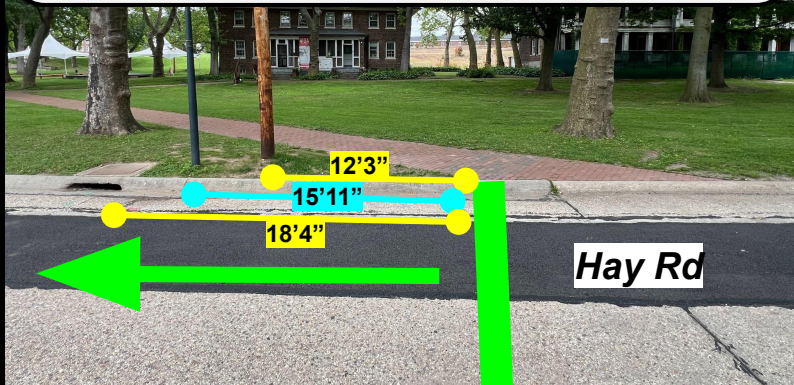
Effective: 07/01/2025

Through: 12/31/2035

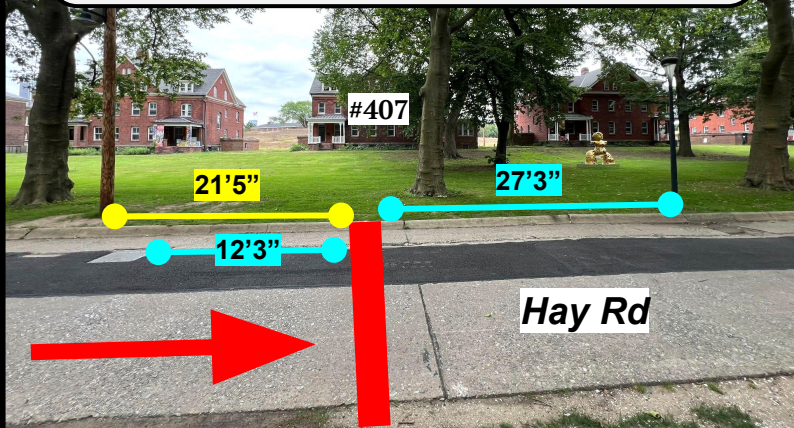
Measured by Matthew Slocum | 28 June 2025

matt@precisioncoursedesign.com

**START:** 40.691135, -74.018742 | On Hay Rd, just S of the curved connector to Wheeler Ave. Even with the trailing (N) edge of where the diagonal brick walkway connects to the curb on the E side of the road (runners' right). 12'3" before (S of) the center of the wooden light pole (L.P.), 15'11" before the center of the dark gray L.P., and 18'4" before the leading (S) edge of the opening for the storm drain in the curb on the right.



**FINISH:** 40.690258, -74.018307 | On Hay Rd, near the center of Building #407 Colonels Row. 21'5" past (S of) the center of the wooden L.P. on the runners' left (E side), 12'3" past the trailing (S) edge of the metal "NYC Electrical" box in the road, and 27'3" before (N of) the center of the gray L.P. (also on the runners' left/E side).

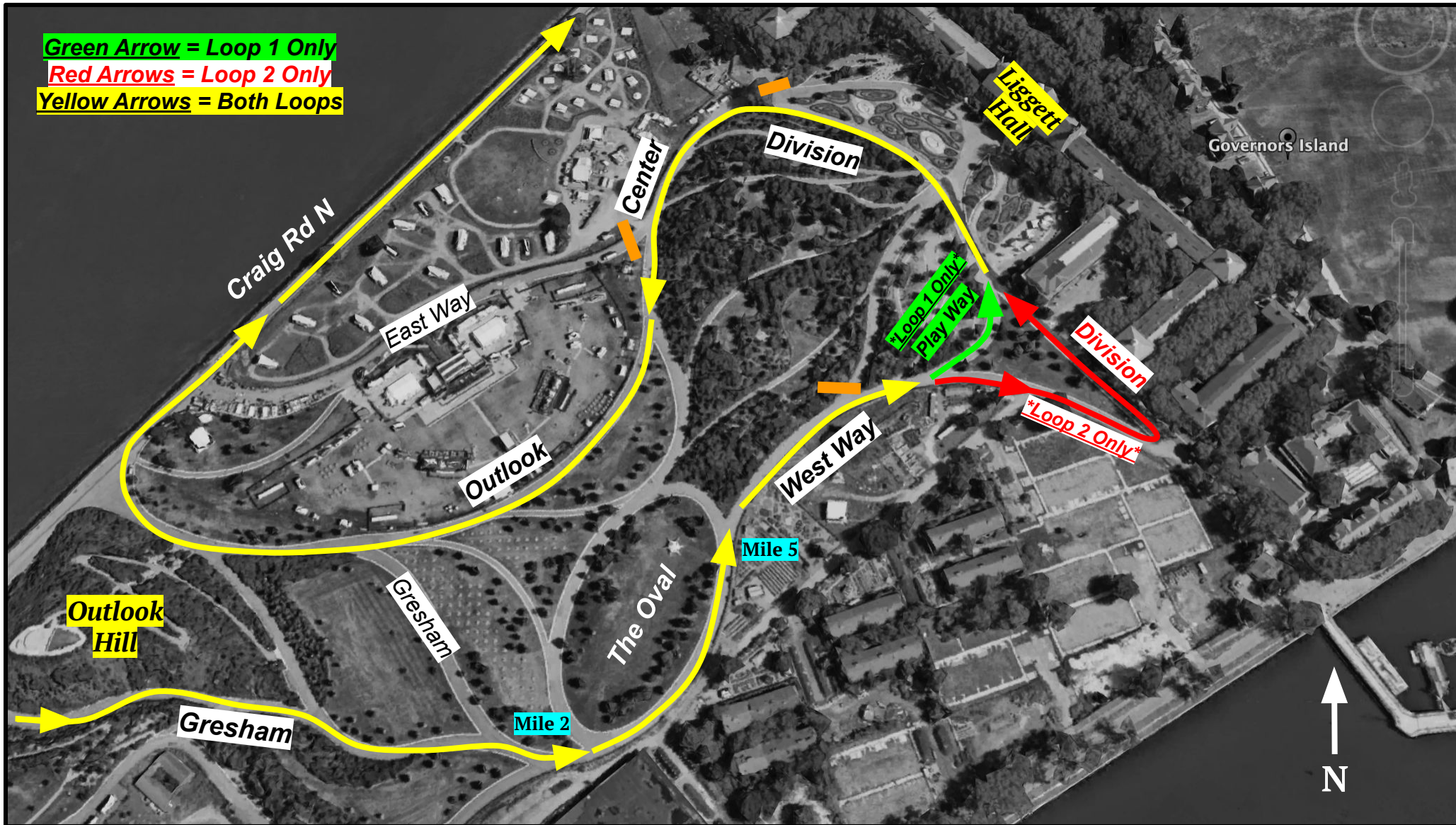




# NYCRUNS Governors Island 10K 2025 #2

## *Supplemental Satellite Imagery Detail*

**Green Arrow = Loop 1 Only**  
**Red Arrows = Loop 2 Only**  
**Yellow Arrows = Both Loops**



# **NYCRUNS Governors Island 10K 2025 #2**

## ***Course Locations***

**START:** [40.691135, -74.018742](#) | On Hay Rd, just S of the curved connector to Wheeler Ave. Even with the trailing (N) edge of where the diagonal brick walkway connects to the curb on the E side of the road (runners' right). 12'3" before (S of) the center of the wooden light pole (L.P.) on the runners' right, 15'11" before the center of the dark gray L.P. (also on the right), and 18'4" before the leading (S) edge of the opening for the storm drain in the curb on the right. Please see the Start Detail Diagram.

**Mile 1:** [40.687323, -74.015214](#) | On Kimmel Rd, near the leading (E) end of Building #301 (Public School 26). 30 feet past (W of) the black fire hydrant on the runners' right and 22'7" past the trailing (W) edge of the storm drain in the road on the runners' left.

**Mile 2:** [40.686245, -74.021716](#) | On Gresham Rd, where the three spurs of Gresham come together just before (SW of) the connection to the S side of The Oval. 6 feet before (SW of) the gray L.P. on the runners' right.

**Mile 3:** [40.691316, -74.020893](#) | On Craig Rd N, between Division and Clayton. 50 feet before (S of) the leading (S) edge of the General Foundries storm drain, which is near the center of the road just before the intersection with Clayton (last storm drain before said intersection). Also 12'10" past (N of) the black fire hydrant on the runners' right.

**5 km:** [40.692626, -74.019877](#) | On Craig Rd N, near the leading (S) edge of Castle Williams. 7'4" past (N of) the wooden L.P. on the runners' right and 27 feet before (S of) the black fire hydrant.

**Mile 4:** [40.687084, -74.016802](#) | On Craig Rd S, just before (NE of) the intersection with Division Rd. Just past (SW of) the trailing (SW) edge of the CitiBike rack. 10'4" past (SW of) the trailing (SW) edge of the front steps for Building #315-Section A, which is on the corner with Division Rd. 5'2" before (NE of) the first (northeastern) of the two black fire hydrants on the runners' right.

**Mile 5:** [40.687245, -74.020744](#) | On the NE side of The Oval. 18 inches before (S of) the street sign on the runners' left which reads "The Oval/East Way". 10'8" past (N of) the gray L.P. on the runners' right.

**Mile 6:** [40.691101, -74.021099](#) | On Craig Rd N, between Division and Clayton. 3'6" past (N of) the trailing (N) edge of the red *Roger M. Cardoso Memorial Bench* (on the runners' left). This is the fourth red bench counting S to N from the intersection with Division.

**FINISH:** [40.690258, -74.018307](#) | On Hay Rd, near the center of Building #407 Colonels Row. 21'5" past (S of) the center of the wooden L.P. on the runners' left (E side), 12'3" past the trailing (S) edge of the metal "NYC Electrical" box in the road, and 27'3" before (N of) the center of the gray L.P. (also on the runners' left). Please see the Finish Detail Diagram.